



India Meteorological Department  
Ministry of Earth Sciences

**SPECIAL MESSAGE**

TIME OF ISSUE: 1410 HOURS IST

DATED: 31.03.2021

FROM: INDIA METEOROLOGICAL DEPARTMENT (FAX NO. 24643965/24699216/24623220)

TO: CONTROL ROOM, NDM, MINISTRY OF HOME AFFAIRS (FAX.NO. 23093750)  
CONTROL ROOM NDMA (FAX.NO. 26701729)  
CABINET SECRETARIAT (FAX.NO.23012284, 23018638)  
PS TO HON'BLE MINISTER FOR S & T AND EARTH SCIENCES (FAX NO.23316745)  
SECRETARY, MOES, (FAX NO. 24629777)  
H.Q. (INTEGRATED DEFENCE STAFF AND CDS) (FAX NO. 23005137/23005147)  
DIRECTOR GENERAL, DOORDARSHAN (23385843)  
DIRECTOR GENERAL, AIR (23421105, 23421219)  
PIB MOES (FAX NO. 23389042)  
UNI (FAX NO. 23355841)  
D.G. NATIONAL DISASTER RESPONSE FORCE (NDRF) (FAX NO. 26105912, 2436 3260)  
DIRECTOR, PUNCTUALITY, INDIAN RAILWAYS (FAX NO. 23388503)  
CHIEF SECRETARY, ANDAMAN & NICOBAR ISLANDS (FAX NO. 03192- 232656)  
CHIEF SECRETARY, ANDHRA PRADESH (FAX NO. 0863-2441029, 08645-246600)  
CHIEF SECRETARY, TAMIL NADU (FAX NO. 044-25672304)  
CHIEF SECRETARY, PUDUCHERRY (FAX NO. 0413-2337575, 2334145)  
CHIEF SECRETARY, GOVT. OF ODISHA (FAX NO. 0674 -2536660)

**Sub: Low Pressure Area over southeast Bay of Bengal and adjoining south Andaman Sea**

A low pressure area formed over southeast **Bay of Bengal and adjoining south Andaman Sea** in the early morning of today, the 31<sup>st</sup> March, 2021. It persists over the same region at 1130 hrs IST of today. It is likely to become more marked over central Andaman Sea & neighbourhood during next 24 hours. There is a low likelihood that it may concentrate into a Depression over the same region during the subsequent 24 hours.

**Rainfall warning:**

Heavy to very heavy rainfall very likely at isolated places over Andaman & Nicobar Islands on 1<sup>st</sup> April, 2021.

**Wind warning:**

31<sup>st</sup> March 2021: Squally winds (speed reaching 40-50 kmph gusting to 60 kmph) very likely over south Andaman Sea & adjoining Southeast Bay of Bengal.

1<sup>st</sup> April, 2021: Squally winds (speed reaching 40-50 kmph gusting to 60 kmph) very likely over south Andaman Sea & adjoining Southeast Bay of Bengal

2<sup>nd</sup> April 2021: Squally winds (speed reaching 45-55 kmph gusting to 65 kmph) very likely over north Andaman Sea

**Fishermen warnings:**

Fishermen are advised not to venture into Andaman Sea & adjoining southeast Bay of Bengal, on 31<sup>st</sup> March & 1<sup>st</sup> April and into north Andaman Sea on 2<sup>nd</sup> April.

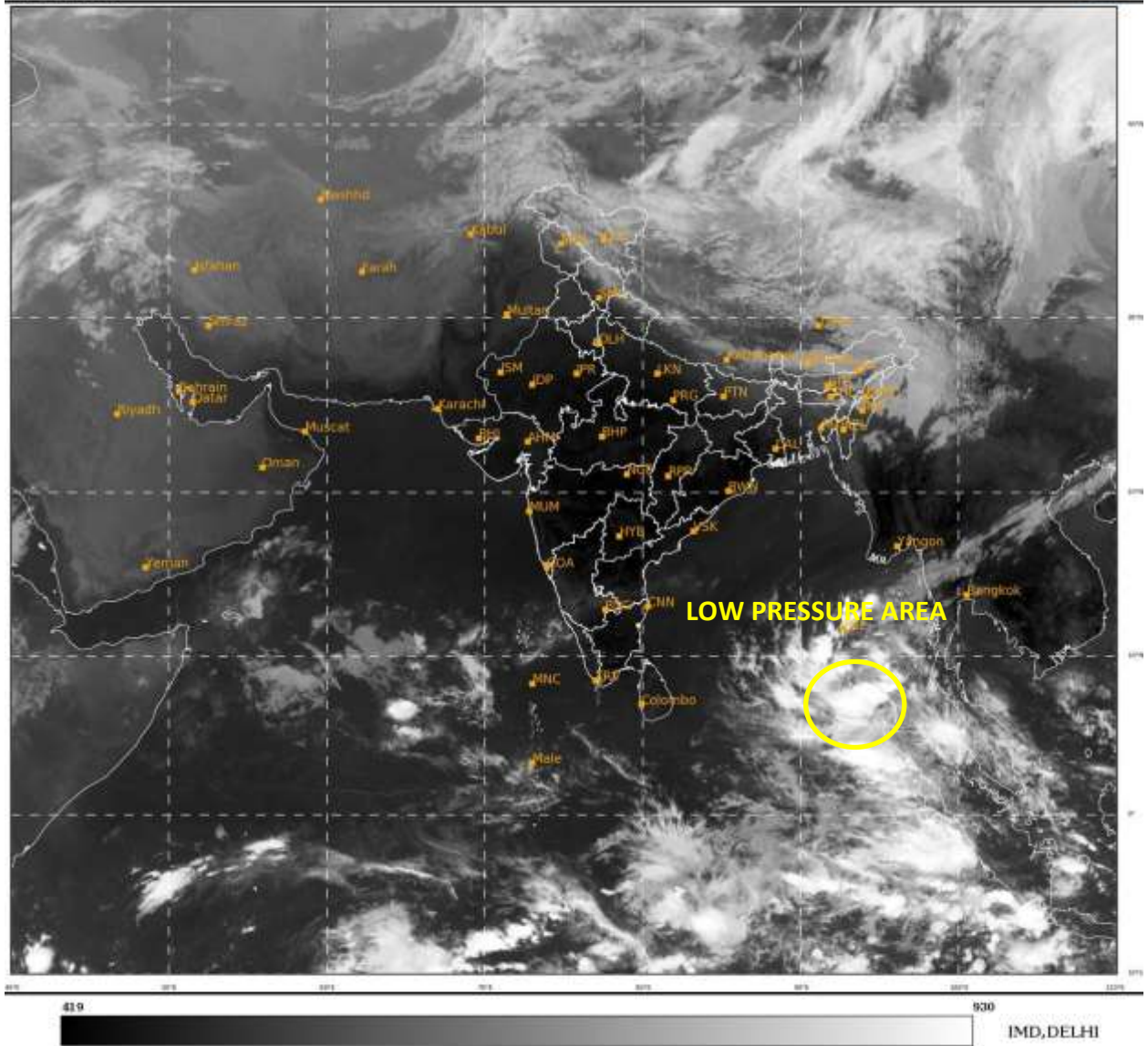
Kindly visit [www.imd.gov.in](http://www.imd.gov.in) and [www.rsmcnewdelhi.imd.gov.in](http://www.rsmcnewdelhi.imd.gov.in) for updates on the low pressure system.

Next update will be issued at 1330 hrs IST of tomorrow, the 01<sup>st</sup> April 2021.

(Sunitha Devi)  
Scientist-F and Head (CWD),  
IMD, New Delhi

Copy to: CRS, Pune/ ACWC Chennai/ Kolkata/CWC Visakhapatnam/CWC Bhubaneswar.

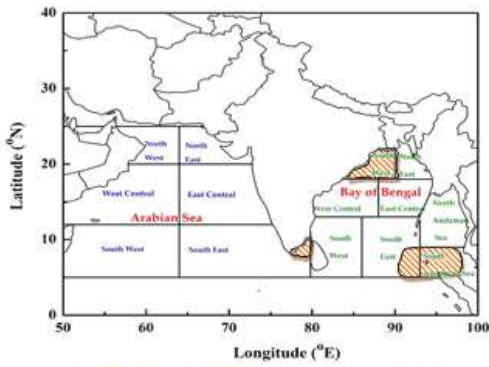
Spatial rainfall distribution: Isolated: <25%, A few: 26-50%, Many: 51-75%, Most: 76-100%  
Rainfall amount (mm): Heavy rain: 64.5 – 115.5, Very heavy rain: 115.6 – 204.4, Extremely heavy rain: 204.5 or more.



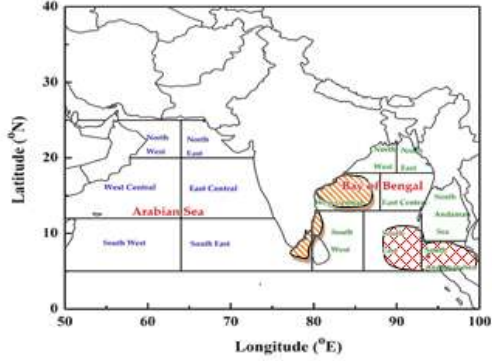
**Spatial rainfall distribution: Isolated: <25%, A few: 26-50%, Many: 51-75%, Most: 76-100%**  
**Rainfall amount (mm): Heavy rain: 64.5 – 115.5, Very heavy rain: 115.6 – 204.4, Extremely heavy rain: 204.5 or more.**

**INDIA METEOROLOGICAL DEPARTMENT**  
**FISHERMAN WARNING FOR BAY OF BENGAL AND ARABIAN SEA**

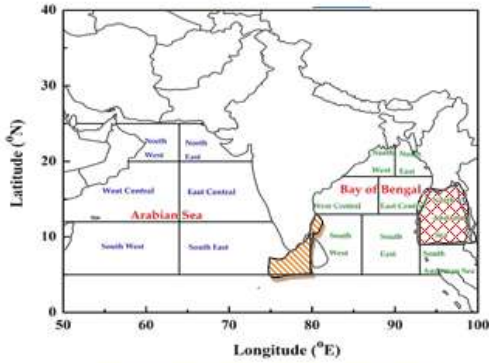
DAY-1: 31-03-2021/0600 UTC TO 01-04-2021/0600 UTC



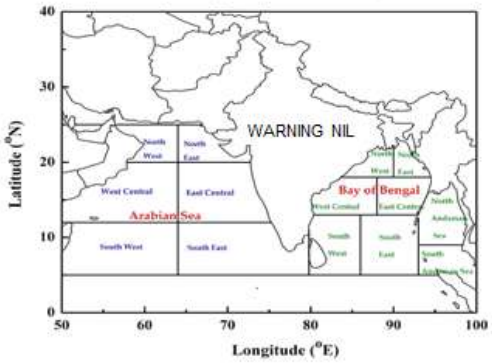
DAY-2: 01-04-2021/0600 UTC TO 02-04-2021/0600 UTC



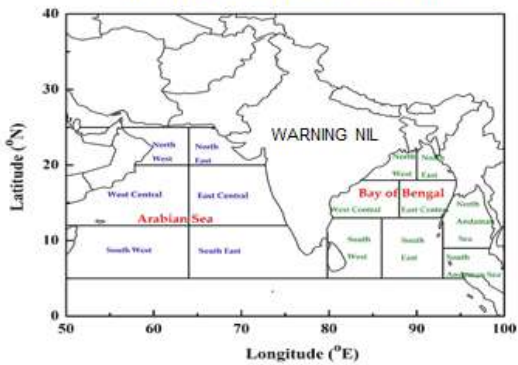
DAY-3: 02-04-2021/0600 UTC TO 03-04-2021/0600 UTC







DAY-4: 03-04-2021/0600 UTC TO 04-04-2021/0600 UTC



DAY-5: 04-04-2021/0600 UTC TO 05-04-2021/0600 UTC



**AREA UNDER FISHERMEN WARNING**

-  35-45 KMPH (SQUALLY)
-  40-50 KMPH GUSTING TO 60 KMPH
-  45-55 KMPH GUSTING TO 65 KMPH
-  55-65 KMPH GUSTING TO 75 KMPH
-  70-80 KMPH GUSTING TO 85 KMPH

**Spatial rainfall distribution: Isolated: <25%, A few: 26-50%, Many: 51-75%, Most: 76-100%**  
**Rainfall amount (mm): Heavy rain: 64.5 – 115.5, Very heavy rain: 115.6 – 204.4, Extremely heavy rain: 204.5 or more.**